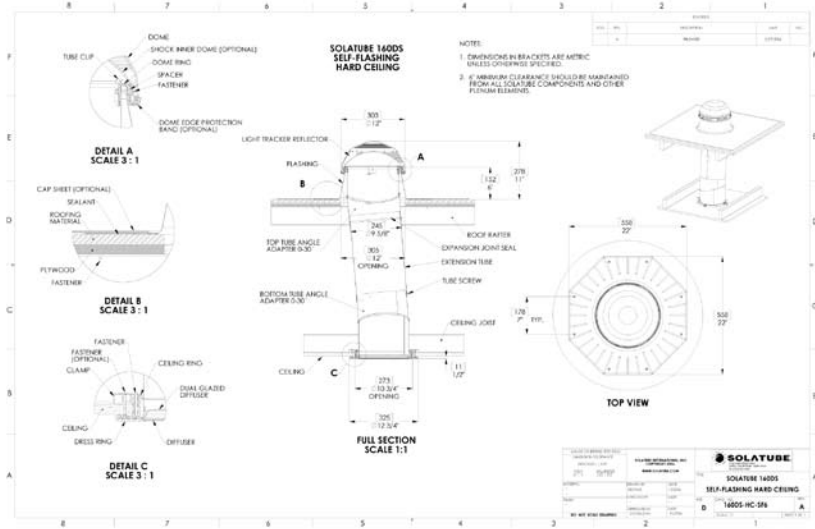


Lighting the Task

Model: Solatube 160 DS (10 in/250 mm Daylighting System)

Recessed Daylighting System for use with either hard or suspended ceiling applications.



Specifications

- 1. Roof Dome** Injection molded, impact-resistant, acrylic with UV protective characteristics. Classified as CC2 material, .125" thick, with visible light transmission minimum 92%. Optional Shock Inner Dome for High Velocity Wind Zones. Raybender® 3000 Technology (Patented) Prismatic pattern molded into dome to capture low angle sunlight.
- 2. LightTracker™ Reflector** increases daylight collection and harvesting for low sun angles, resulting in increased light output. Spectralight® Infinity. For specifications see # 5 below.
- 3. Dome Ring** contains condensation gutter designed to channel out condensed moisture. Injection molded impact resistant acrylic.
- 4. Roof Flashing:** Metal with protective powder coating complements roofing materials and combats corrosive material. Alternative Roof Flashing: CC2 long-lasting polypropylene, 30% mica-filled for added strength and durability.
- 5. Spectralight® Infinity Tubing:** Fabricated from aluminum sheet meeting the requirements of ASTM B 209, alloy and temper required by the manufacturer to suit forming operations and finish requirements, .015" thick.

Interior Finish: Spectralight Infinity high reflectance specular finish on exposed reflective surface; Visible spectrum (400 nm to 760 nm) greater than 99%; Total solar spectrum (400 nm to 2500 nm) less than 93%.

Color: a* and b* (defined by CIE L*a*b color model) shall not exceed plus 2 or be less than minus 2 as determined in accordance to ASTM E 308.

- 6. The 30 degree angle adaptors:** Spectralight Infinity tubing fabricated from aluminum sheet meeting the requirements of ASTM B 209, alloy and temper required by the manufacturer to suit forming operations and finish requirements, .015" thick. Optional 0-90 Degree extension tube also available (.018" thick).
- 7. Ceiling Ring:** Injected molded impact resistant acrylic.
- 8. Ceiling Diffuser Assembly (dual glazed):**

- a. Diffuser Trim Ring:** three options, White Trim, Stainless-Tone Trim, or Frosted Shade
 White Trim - Injection molded impact resistant acrylic
 Stainless-Tone Trim - Injection molded, impact resistant acrylic tinted
 Frosted Shade - Injection molded impact resistant acrylic dress ring with pre-assembled injection molded cone fixture.
- b. Diffuser Lens:** two lens options, OptiView® Diffuser or Vusion™ Diffuser.
 OptiView - molded polycarbonate plastic classified as CC1 material.
 Vusion - injection molded acrylic plastic classified as CC2 material.
- c. Effect Lens:** three options for softening and warming the light color. Warm Effect Lens, Softening Effect Lens or Warm Softening Effect Lens.

Features

- ✓ **UV and Impact Resistant Dome** for extended service life.
- ✓ **Seamless Flashings** are fabricated as a single, seamless piece to ensure leakproof performance.
- ✓ **Small 12" Diameter Roof-top Penetration** fits between normal 16" on center structural framing.
- ✓ **Compact and Adjustable Tubing** fits around plenum obstructions.
- ✓ **Spectralight Infinity** super-reflective tubing provides maximum light transfer.
- ✓ **Easily Reconfigured** to accommodate future interior layout changes.
- ✓ **Available Light and Ventilation Kits** allow the unit to serve up to three functions with only one aperture in the ceiling.
- ✓ **Choice of Diffuser Technologies** provides cost-effective options for providing comfortable, diffuse light into the workspace.

Performance

Relative Lumen Output

3,000 Average Lumens
Up to 4,600 Maximum Lumens

Solatube relative light output based upon 6' run for the Solatube 160 DS. Maximum and average values achieved over the peak 2,400 annual daylight hours for San Diego, California TMY2 Weather Data.

For IES Photometry and Detailed Lumen Output Data Tables, visit

www.solatube.com/commercial/technical_resources.php

Sample distribution for the OptiView® Diffuser.

