

Project: _____ Location: _____ Type: _____

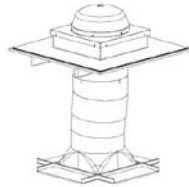
To Order (Note: Product Specifications Appear in CSI Division 08, Section 08625)

S **2** **1** **C** - - **F** - **E** - **L** - -

1
2
3
4
5
6
7

1 Model

S21C = SolaMaster® Series Solatube 21-C (21 in/530 mm Daylighting System) Suspended Ceiling



2 Dome

DA = Dome Acrylic

DP = Dome Polycarbonate (High Velocity Wind Zones Only)

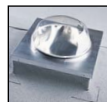
3 Flashings

_____ **F04** = 4-inch Self Mounted



F08 = 8-inch Self Mounted

_____ **F11** = 11-inch Self Mounted



FCM = Curb Mounted Flashing (Curb By Others)

4 Extension Tubes Required

Run measured from top of roof deck to bottom of ceiling plane along centerline of tubing.

E00 = Base Kit, No Extension Tubes - Max Run = 28"

E01 = One Extension - Max Run = 50"

E02 = Two Extension Tubes - Max Run = 72"

E03 = Three Extension Tubes - Max Run = 94"

E04 = Four Extension Tubes - Max Run = 116"

E05 = Five Extension Tubes - Max Run = 138"

E06 = Six Extension Tubes - Max Run = 160"

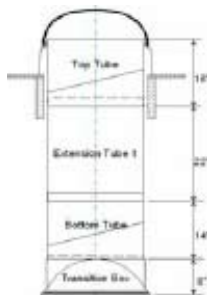
E07 = Seven Extension Tubes - Max Run = 182"

E08 = Eight Extension Tubes - Max Run = 204"

E09 = Nine Extension Tubes - Max Run = 226"

E10 = Ten Extension Tubes - Max Run = 248"

EXX = Total Run Length to be Determined by Bidding Contractor



5 Diffuser Lens



L1 = OptiView® Diffuser



L2 = Prismatic Diffuser



L3 = Frosted Diffuser

6 Options

D = Daylight Dimmer



SS = Secondary Diffuser

B = Security Bar

SK = Dome Security Kit

E = Wire Suspension Kit

P = PVC Boot (Verify Availability, Special Order - Requires 60-day Lead Time and order of 100 or more)

T12 = Roof Flashing Turret Extension 12 in/300 mm

T24 = Roof Flashing Turret Extension 24 in/600 mm

T36 = Roof Flashing Turret Extension 36 in/900 mm

T48 = Roof Flashing Turret Extension 48 in/1200 mm

FI = Flashing Insulator

PB = Dome Edge Protection Band

7 Measurement Standard

M = Metric **I** = Imperial

Accessories

Order separately. See accessories Section for specifications.

SW = Low voltage switch (white) required to operate Solatube Daylight Dimmers. Note: only one switch is required per set of synchronously controlled dimmers.

CA = Two Conductor Low Voltage Cable (500 ft)

Example

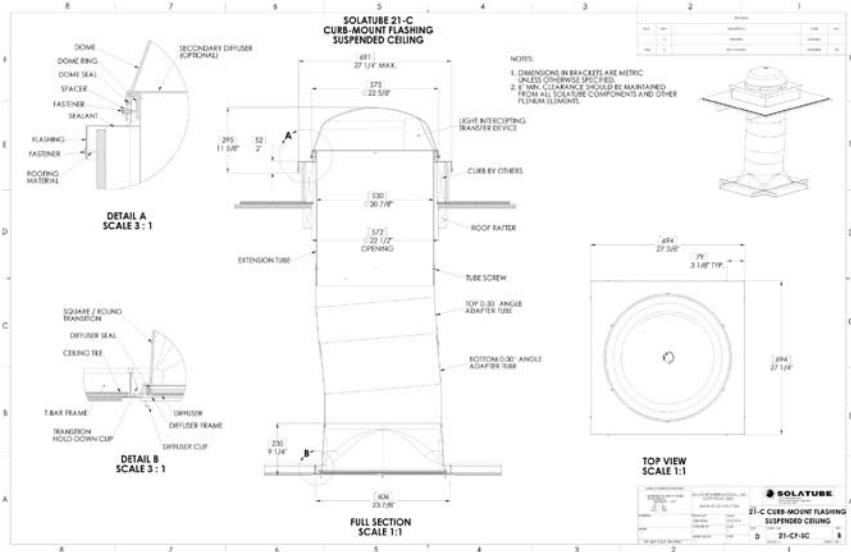
S 2 1 C - D A - F 0 8 - E 0 0 - L 2 - B - I

SolaMaster® Series 21-C (21 in/530 mm Daylighting System), Acrylic Dome, 8-inch high Self Mounted Flashing, Base Kit, Prismatic Diffuser, and Security Bar. For non-metric installations.

Lighting the Task

Model: Solatube 21-C Suspended Ceiling (21 in/530 mm Daylighting System)

Recessed Daylighting System for use with either hard or suspended ceiling applications.



Specifications

- Dome is UV and impact resistant** for extended service life. Its low profile design is unobtrusive. Impact modified, acrylic. Classified as CC2 material, .143" thick, with visible light transmission of 92% and ultra violet light transmission of .03%. (Optional polycarbonate domes available.)
- LightTracker™ Reflector** increases daylight collection and harvesting for low sun angles, resulting in increased light output. Spectralight® Infinity. For specifications see # 6 below.
- Permeable Dome Seal** locks out dust and bugs, but allows moisture to escape. Black breathable weatherstrip material with 0.40" pile.
- Dome Ring and Dome Seal** to channel condensed moisture out of the system. Durable white PVC, injection molded non-corrosive material.
- One-Piece Seamless Flashing**, 4"-, 8"- and 11"- high (100 mm/200 mm/280 mm) ensures a no-leak installation. 0.028 inches thick aluminized steel with powder coated exterior.
- The **30-degree Angle Adaptors** feature 30-degree elbows for easy installations. The diameter tubes fit between 24" (600 mm) on center framing. Angle adaptors utilize Spectralight® Infinity for a reflective surface.

Spectralight® Infinity material, fabricated from aluminum sheet meeting ASTM B 209 requirements, alloy and temper required by the manufacturer to suit forming operations and finish requirements, 0.018" thick.

Interior Finish: Spectralight Infinity high reflectance specular finish on exposed reflective surface; Visible spectrum (400 nm to 760 nm) greater than 99%; Total solar spectrum (400 nm to 2500 nm) less than 93%.

Color: a* and b* (defined by CIE L*a*b color model) shall not exceed plus 2 or be less than minus 2 as determined in accordance to ASTM E 308.

- Extension Tubes** are 24 in/600 mm in length, for installations up to 50 ft/15 m. Spectralight® Infinity.
- 2' x 2' (600mm x 600mm) Transition Box** (21 in/530 mm only). Fits a standard suspended ceiling system. Opaque polymeric material, classified as CC2, 0.110 in/3 mm thick.
- Square Diffuser Panel** fits into the transition box and complements traditional light fixtures. UV and weather resistant diffuser seal provides an effective dust and bug seal.

Features

- ✓ **UV and Impact Resistant Dome** for extended service life.
- ✓ **Seamless Flashings** are fabricated as a single, seamless piece to ensure leakproof performance available in both self flashing and curb mounted.
- ✓ **Small 23" Diameter Roof-top Penetration** fits between normal structural framing.
- ✓ **Compact and Adjustable Tubing** fits around plenum obstructions.
- ✓ **Easily Reconfigured** to accommodate future interior layout changes.
- ✓ **Patented 2'x2' Transition Box** and diffuser panel fits a standard suspended ceiling tile grid or hard ceiling and blends with traditional lighting fixtures.
- ✓ **Choice of OptiView®, Prismatic, or Frosted Diffuser** technologies provides cost-effective options for providing comfortable, diffuse light into the workspace.

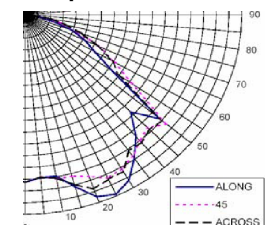
Performance

Relative Lumen Output

13,500 Average Lumens
Up to 20,500 Maximum Lumens

Solatube relative light output based upon 10' tube run for the Solatube 21-C. Maximum and average values achieved over the peak 2,400 annual daylight hours for San Diego California TMY2 Weather Data.

Sample distribution for the OptiView® Diffuser.



For IES Photometry and Detailed Lumen Output Data Tables, visit www.solatube.com/com_tech_resource_center.php