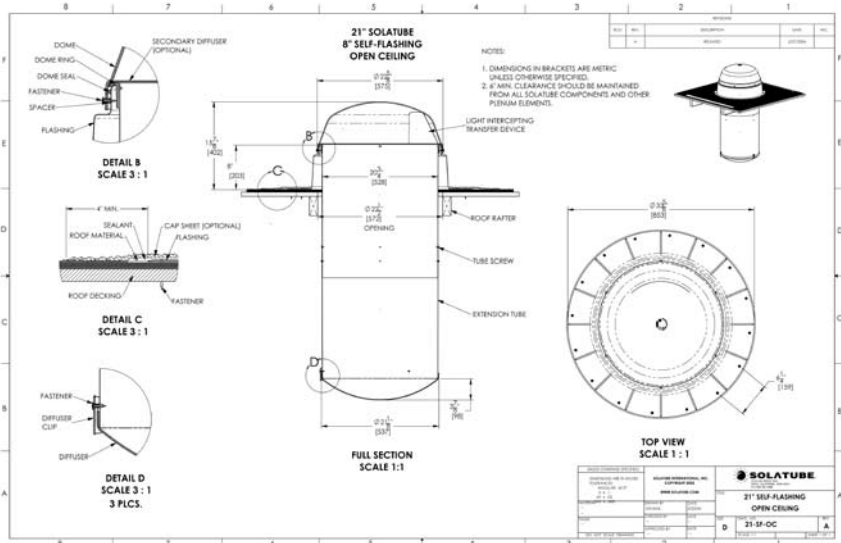


Lighting the Task

Model: Solatube 21-0 Open Ceiling (21 in/530 mm Daylighting System)

Daylighting System for use with open ceiling applications.



Specifications

- Dome is UV and impact resistant** for extended service life. Its low profile design is unobtrusive. Impact modified, acrylic. Classified as CC2 material, .143" thick, with visible light transmission of 92% and ultra violet light transmission of .03%. (Optional polycarbonate domes available.)
- LightTracker™ Reflector** increases daylight collection and harvesting for low sun angles, resulting in increased light output. Spectralight® Infinity. For specifications see # 6 below.
- Permeable Dome Seal** locks out dust and bugs, but allows moisture to escape. Black breathable weatherstrip material with 0.40" pile.
- Dome Ring and Dome Seal** to channel condensed moisture out of the system. Durable white PVC, injection molded non-corrosive material.
- One-Piece Seamless Flashing**, 4"-, 8"- and 11"- high (100 mm/200 mm/280 mm) ensures a no-leak installation. 0.028 inches thick aluminized steel with powder coated exterior.
- The 30-degree Angle Adaptors** feature 30-degree elbows for easy installations. The diameter tubes fit between 24" (600 mm) on center framing. Angle adaptors utilize Spectralight® Infinity for a reflective surface.

Spectralight® Infinity material, fabricated from aluminum sheet meeting ASTM B 209 requirements, alloy and temper required by the manufacturer to suit forming operations and finish requirements, 0.018" thick.

Interior Finish: Spectralight Infinity high reflectance specular finish on exposed reflective surface; Visible spectrum (400 nm to 760 nm) greater than 99%; Total solar spectrum (400 nm to 2500 nm) less than 93%.

Color: a* and b* (defined by CIE L*a*b color model) shall not exceed plus 2 or be less than minus 2 as determined in accordance to ASTM E 308.

Extension Tubes are 24 in/600 mm in length, for installations up to 50 ft/15 m. Spectralight® Infinity.

- Spectralight® Infinity Extension Tubes** are 24 in/600 mm in length, for installations up to 40 ft/20 m or more. Specifications are same as above.
- Domed Prismatic Diffuser Panel** clips onto the bottom of the optical tubing and complements traditional high-bay light fixtures. UV and weather resistant diffuser seal provides an effective dust and bug seal.

Features

- ✓ **UV and Impact Resistant Dome** for extended service life.
- ✓ **Seamless Flashings** are fabricated as a single, seamless piece to ensure leakproof performance available in both self flashing and curb mounted.
- ✓ **Small 23" Diameter Roof-top Penetration** fits between normal structural framing.
- ✓ **Compact Size** allows layout control so light can be placed and focused between racking aisles.
- ✓ **Spectralight Infinity** super-reflective tubing provides maximum light transfer.
- ✓ **Easily Reconfigured** to accommodate future interior layout changes.
- ✓ **Prismatic Diffuser** technology provides cost-effective diffuse light into the workspace.

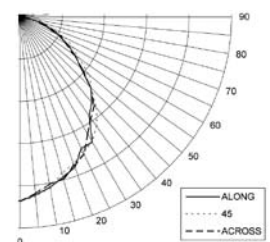
Performance

Relative Lumen Output

13,900 Average Lumens
Up to 20,800 Maximum Lumens

Solatube relative light output based upon 30" tube run for Solatube 21-0 products. Maximum and average values achieved over the peak 2,400 annual daylight hours for San Diego California TMY2 Weather Data.

Sample distribution for the Prismatic Diffuser.



For IBS Photometry and Detailed Lumen Output Data Tables, visit www.solatube.com/com_tech_resource_center.php